

Features

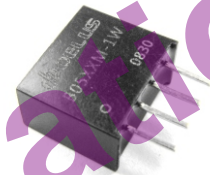
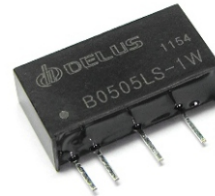
- ◆ Operating temperature: -40 to +85°C
- ◆ 1.5/3.0kVdc isolation
- ◆ 100% burn-in
- ◆ No external component required
- ◆ UL94V-0 package
- ◆ RoHS compliance

Typical Applications

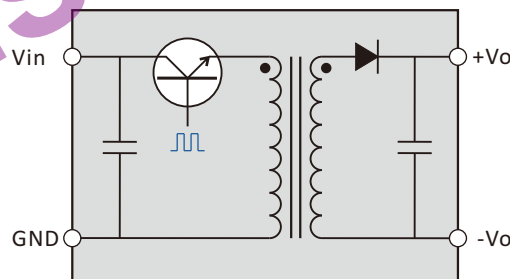
- ◆ Intelligent control, power monitoring equipment, security facilities, radio and television appliances power isolation & transform
- ◆ RS485/232, CAN bus interface, power supply isolation and other digital communication circuit
- ◆ Power ground circulation & interference suppression

General Description

B/F-1W is unregulated single output series, in use can be simply understood as a common frequency transformer (see functional diagram), the only difference is that it can achieve the DC to DC voltage conversion. The family offers a variety of standard voltage combinations, isolation voltage 1.5/3.0kVdc two grades.



Functional Diagram



Selection Guide

B 05 05 S - 1W

Product Series	Input Voltage	Output Voltage	Package Style	Rated Power
B: isolated 1.5kVdc single F: isolated 3.0kVdc single	05 = 5Vdc 12 = 12Vdc 24 = 24Vdc 48 = 48Vdc	03 = 3.3Vdc 05 = 5Vdc 09 = 9Vdc 12 = 12Vdc 15 = 15Vdc 24 = 24Vdc	S,LS,MS,M: single in-line D,LD,N: dual in-line	1W = 1Watt

B-1W & F-1W Series

1w, fixed input, isolated & unregulated single output dc-dc converter



Input Specifications

Item	Min	Typ	Max	Units
Input Surge Voltage (1 sec max)	5V input	-0.7	7	Vdc
	12V input	-0.7	15	
	24V input	-0.7	28	
	48V input	-0.7	54	
Reverse Polarity Input Current			0.4	A
Internal Power Dissipation			0.45	W
Input Filter	"C" filter			

Output Specifications

Item	Test Conditions	Min	Typ	Max	Units	
Output Power	Ta=-40-+85°C	0.1		1	W	
Line Regulation	For vin change of ±1%			±1.2	%/%	
Load Regulation	Nominal 10%-100% load		12	20	%	
		3.3V output		10.5		15
		5V output		8.3		15
		9V output		6.8		15
		12V output		6.3		15
		15V output		5		15
24V output						
Output Voltage Accuracy	See Tolerance Envelope Graph					
Temperature Drift	Nominal, 100% load			0.03	%/°C	
Ripple & Noise	DC-20MHz bandwidth		100	200	mVp-p	
Switching Frequency	Nominal, 100% load	80	100	130	KHz	
Short Circuit Protection				1	S	

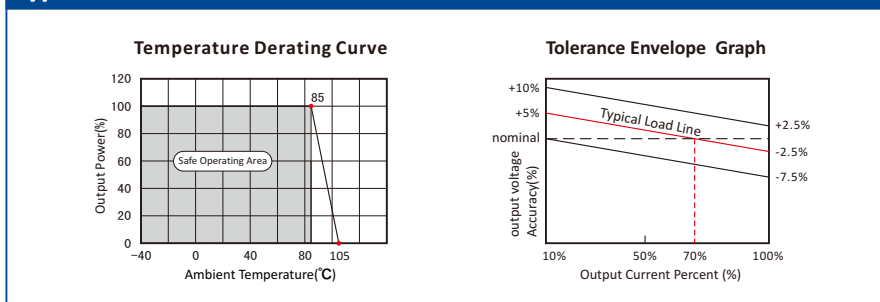
Isolation Specifications

Item	Test Conditions	Min	Typ	Max	Units
Isolation Resistance	Test at 500Vdc	1000			MΩ
Isolation Voltage	Tested for 1S and 1mA max	B		1500	Vdc
		F		3000	

Common Specification

Item	Test Conditions	Min	Typ	Max	Units
Operating Temperature		-45		+85	°C
Maximum Case Temp.			45		
Storage Temperature		-50		+130	
Lead Temperature	1.5mm from case for 10 seconds			+300	
Storage Humidity				95	%
Case Material	Black Plastic (UL94V-0)				

Typical Characteristic Curve



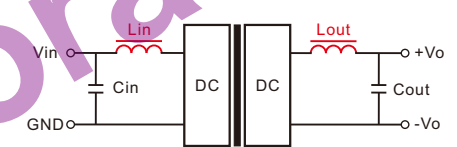
Application Note

1. Requirement On Output Load

To ensure this DC/DC can operate efficiently and reliably, during operation, the minimum output load is not less than 10% of the full load, and that **this product should never be operated under no load!** If the actual output power is very small, please connect a resistor with proper resistance at the output end in parallel to increase the load.

2. Output filter

The DC/DC without any external filter components in the case that can be stable and reliable work. If you want to further reduce ripple and improve the EMC, please connect a external filter circuit at the inputs and outputs (see figure). General, recommended values 10-100uF with input capacitor, and recommended values with output capacitor see the following table.



"Lin, Lout" not required, recommended values 4.7-22uH

Table 1

Cin	Cout	
10~100uF	3.3V	10uF
	5V	10uF
	9V	4.7uF
	12V	2.2uF
	15V	1uF
	24V	1uF

It's not recommended to connect any external capacitor in the application field with less than 0.5 watt output.

If the maximum external output capacitor still does not meet your requirements of ripple may be required connect the filter inductor (see figure), Lout values recommended 4.7-100uH. It should be noted "LC" filtering network natural frequency should be staggered with the DC/DC operating frequency to avoid mutual interference.

3. This product cannot be used in parallel, can not hot-swappable.

B_LS-1W & F_LS-1W Series

1w, fixed input, isolated & unregulated single output dc-dc converter



Product Program

Model	Input		Output				Eff (%)	Certificate	Mechanical Dimensions First Angle Projection	
	Voltage(Vdc)		Voltage(Vdc)	Current(mA)		Ripple (mVp-p)				
	Nominal	Range	Nominal	Max	Min					
B0503LS-1W	5	4.5~5.5	3.3	300	30		75	 Weight: 2.1g Isolation: 1500Vdc Note: all size units mm, diameter of all terminal 0.5mm, distance between all adjacent terminal 2.54mm input or output voltage >= 24V, T=7.05mm		
B0505LS-1W			5	200	20		72			
B0509LS-1W			9	111	12		75			
B0512LS-1W			12	83	9		78			
B0515LS-1W			15	67	7		80			
B0524LS-1W			24	42	5		82			
B1203LS-1W	12	10.8~13.2	3.3	300	30		75			
B1205LS-1W			5	200	20		72			
B1209LS-1W			9	111	12		78			
B1212LS-1W			12	83	9		80			
B1215LS-1W			15	67	7		83			
B1224LS-1W			24	42	5		86			
B2403LS-1W	24	21.6~26.4	3.3	300	30		75			
B2405LS-1W			5	200	20		72			
B2409LS-1W			9	111	12		79			
B2412LS-1W			12	83	9		81			
B2415LS-1W			15	67	7		84			
B2424LS-1W			24	42	5		86			

F0503LS-1W	5	4.5~5.5	3.3	300	30		75	 Weight: 2.1g Isolation: 3000Vdc Note: all size units mm, diameter of all terminal 0.5mm, distance between all adjacent terminal 2.54mm input or output voltage >= 24V, T=7.05mm	
F0505LS-1W			5	200	20		72		
F0509LS-1W			9	111	12		75		
F0512LS-1W			12	83	9		78		
F0515LS-1W			15	67	7		80		
F0524LS-1W			24	42	5		82		
F1203LS-1W	12	10.8~13.2	3.3	300	30		75		
F1205LS-1W			5	200	20		72		
F1209LS-1W			9	111	12		78		
F1212LS-1W			12	83	9		80		
F1215LS-1W			15	67	7		83		
F1224LS-1W			24	42	5		86		
F2403LS-1W	24	21.6~26.4	3.3	300	30		75		
F2405LS-1W			5	200	20		72		
F2409LS-1W			9	111	12		79		
F2412LS-1W			12	83	9		81		
F2415LS-1W			15	67	7		84		
F2424LS-1W			24	42	5		86		

B_S-1W & F_M-1W Series

1w, fixed input, isolated & unregulated single output dc-dc converter



Product Program

Model	Input		Output				Eff (%)	Certificate	Mechanical Dimensions First Angle Projection	
	Voltage(Vdc)		Voltage(Vdc)	Current(mA)		Ripple (mVp-p)				
	Nominal	Range	Nominal	Max	Min					
B0503S-1W	5	4.5~5.5	3.3	300	30		75	<p>Weight: 1.6g</p>		
B0505S-1W			5	200	20		72			
B0509S-1W			9	111	12		75			
B0512S-1W			12	83	9		78			
B0515S-1W			15	67	7		80			
B0524S-1W			24	42	5		82			
B1203S-1W	12	10.8~13.2	3.3	300	30		75			
B1205S-1W			5	200	20		72			
B1209S-1W			9	111	12		78			
B1212S-1W			12	83	9		80			
B1215S-1W			15	67	7		83			
B1224S-1W			24	42	5		85			
B2403S-1W	24	21.6~26.4	3.3	300	30		75		<p>Weight: 1.6g</p>	
B2405S-1W			5	200	20		72			
B2409S-1W			9	111	12		79			
B2412S-1W			12	83	9		81			
B2415S-1W			15	67	7		84			
B2424S-1W			24	42	5		86			
F0503M-1W	5	4.5~5.5	3.3	300	30		75	<p>Weight: 1.6g</p>		
F0505M-1W			5	200	20		72			
F0509M-1W			9	111	12		75			
F0512M-1W			12	83	9		78			
F0515M-1W			15	67	7		80			
F0524M-1W			24	42	5		82			
F1203M-1W	12	10.8~13.2	3.3	300	30		75			
F1205M-1W			5	200	20		72			
F1209M-1W			9	111	12		78			
F1212M-1W			12	83	9		80			
F1215M-1W			15	67	7		83			
F1224M-1W			24	42	5		85			
F2403M-1W	24	21.6~26.4	3.3	300	30		75		<p>Weight: 1.6g</p>	
F2405M-1W			5	200	20		72			
F2409M-1W			9	111	12		79			
F2412M-1W			12	83	9		81			
F2415M-1W			15	67	7		84			
F2424M-1W			24	42	5		86			

Isolation: 1500Vdc
 Note: all size units mm, diameter of all terminal 0.5mm, distance between all adjacent terminal 2.54mm
 input or output voltage >= 24V, T=7.55mm

Pin	1	2	3	4
Function	GND	Vin	-Vo	+Vo

Isolation: 3000Vdc
 Note: all size units mm, diameter of all terminal 0.5mm, distance between all adjacent terminal 2.54mm
 input or output voltage >= 24V, T=7.55mm

Pin	1	2	3	4
Function	GND	Vin	-Vo	+Vo

B_MS-1W & F_MS-1W Series

1w, fixed input, isolated & unregulated single output dc-dc converter



Product Program

Model	Input		Output				Eff (%)	Certificate	Mechanical Dimensions First Angle Projection
	Voltage(Vdc)		Voltage(Vdc)	Current(mA)		Ripple (mVp-p)			
	Nominal	Range	Nominal	Max	Min				
B0503MS-1W	5	4.5~5.5	3.3	300	30		75	<p>Weight: 2.0g</p>	
B0505MS-1W			5	200	20		80		
B0509MS-1W			9	111	12		75		
B0512MS-1W			12	83	9		78		
B0515MS-1W			15	67	7		80		
B0524MS-1W			24	42	5		82		
B1203MS-1W	12	10.8~13.2	3.3	300	30		75		
B1205MS-1W			5	200	20		80		
B1209MS-1W			9	111	12		78		
B1212MS-1W			12	83	9		80		
B1215MS-1W			15	67	7		83		
B1224MS-1W			24	42	5		85		
B2403MS-1W	24	21.6~26.4	3.3	300	30		75		
B2405MS-1W			5	200	20		80		
B2409MS-1W			9	111	12		79		
B2412MS-1W			12	83	9		81		
B2415MS-1W			15	67	7		84		
B2424MS-1W			24	42	5		86		

Isolation: 1500Vdc
 Note: all size units mm, diameter of all terminal 0.5mm, distance between all adjacent terminal 2.54mm

Pin	1	2	4	6
Function	Vin	GND	-Vo	+Vo

F0503MS-1W	5	4.5~5.5	3.3	300	30		75	<p>Weight: 2.0g</p>
F0505MS-1W			5	200	20		80	
F0509MS-1W			9	111	12		75	
F0512MS-1W			12	83	9		78	
F0515MS-1W			15	67	7		80	
F0524MS-1W			24	42	5		82	
F1203MS-1W	12	10.8~13.2	3.3	300	30		75	
F1205MS-1W			5	200	20		80	
F1209MS-1W			9	111	12		78	
F1212MS-1W			12	83	9		80	
F1215MS-1W			15	67	7		83	
F1224MS-1W			24	42	5		85	
F2403MS-1W	24	21.6~26.4	3.3	300	30		75	
F2405MS-1W			5	200	20		80	
F2409MS-1W			9	111	12		79	
F2412MS-1W			12	83	9		81	
F2415MS-1W			15	67	7		84	
F2424MS-1W			24	42	5		86	

Isolation: 3000Vdc
 Note: all size units mm, diameter of all terminal 0.5mm, distance between all adjacent terminal 2.54mm

Pin	1	2	4	6
Function	Vin	GND	-Vo	+Vo

B_LD-1W & F_LD-1W Series

1w, fixed input, isolated & unregulated single output dc-dc converter



Product Program

Model	Input		Output				Eff (%)	Certificate	Mechanical Dimensions First Angle Projection											
	Voltage(Vdc)		Voltage(Vdc)	Current(mA)		Ripple (mVp-p)														
	Nominal	Range	Nominal	Max	Min															
B0503LD-1W	5	4.5~5.5	3.3	300	30		75	 Weight: 2.5g Isolation: 1500Vdc Note: all size units mm, diameter of all terminal 0.5mm, distance between all adjacent terminal 2.54mm												
B0505LD-1W			5	200	20		80													
B0509LD-1W			9	111	12		75													
B0512LD-1W			12	83	9		78													
B0515LD-1W			15	67	7		80													
B0524LD-1W			24	42	5		82													
B1203LD-1W	12	10.8~13.2	3.3	300	30		75													
B1205LD-1W			5	200	20		80													
B1209LD-1W			9	111	12		78													
B1212LD-1W			12	83	9		80													
B1215LD-1W			15	67	7		83													
B1224LD-1W			24	42	5		85													
B2403LD-1W	24	21.6~26.4	3.3	300	30		75		 Isolation: 3000Vdc Note: all size units mm, diameter of all terminal 0.5mm, distance between all adjacent terminal 2.54mm											
B2405LD-1W			5	200	20		80													
B2409LD-1W			9	111	12		79													
B2412LD-1W			12	83	9		81													
B2415LD-1W			15	67	7		84													
B2424LD-1W			24	42	5		86													
								<table border="1"> <tr> <td>Pin</td> <td>1</td> <td>7</td> <td>8</td> <td>9</td> <td>14</td> </tr> <tr> <td>Function</td> <td>GND</td> <td>NC</td> <td>-Vo</td> <td>+Vo</td> <td>Vin</td> </tr> </table>	Pin	1	7	8	9	14	Function	GND	NC	-Vo	+Vo	Vin
Pin	1	7	8	9	14															
Function	GND	NC	-Vo	+Vo	Vin															

F0503LD-1W	5	4.5~5.5	3.3	300	30		75	 Weight: 2.5g Isolation: 3000Vdc Note: all size units mm, diameter of all terminal 0.5mm, distance between all adjacent terminal 2.54mm												
F0505LD-1W			5	200	20		80													
F0509LD-1W			9	111	12		75													
F0512LD-1W			12	83	9		78													
F0515LD-1W			15	67	7		80													
F0524LD-1W			24	42	5		82													
F1203LD-1W	12	10.8~13.2	3.3	300	30		75													
F1205LD-1W			5	200	20		80													
F1209LD-1W			9	111	12		78													
F1212LD-1W			12	83	9		80													
F1215LD-1W			15	67	7		83													
F1224LD-1W			24	42	5		85													
F2403LD-1W	24	21.6~26.4	3.3	300	30		75		 Isolation: 3000Vdc Note: all size units mm, diameter of all terminal 0.5mm, distance between all adjacent terminal 2.54mm											
F2405LD-1W			5	200	20		80													
F2409LD-1W			9	111	12		79													
F2412LD-1W			12	83	9		81													
F2415LD-1W			15	67	7		84													
F2424LD-1W			24	42	5		86													
								<table border="1"> <tr> <td>Pin</td> <td>1</td> <td>7</td> <td>8</td> <td>9</td> <td>14</td> </tr> <tr> <td>Function</td> <td>GND</td> <td>NC</td> <td>-Vo</td> <td>+Vo</td> <td>Vin</td> </tr> </table>	Pin	1	7	8	9	14	Function	GND	NC	-Vo	+Vo	Vin
Pin	1	7	8	9	14															
Function	GND	NC	-Vo	+Vo	Vin															

B_D-1W & F_N-1W Series

1w, fixed input, isolated & unregulated single output dc-dc converter



Product Program

Model	Input		Output				Eff (%)	Certificate	Mechanical Dimensions First Angle Projection									
	Voltage(Vdc)		Voltage(Vdc)	Current(mA)		Ripple (mVp-p)												
	Nominal	Range	Nominal	Max	Min													
B0503D-1W	5	4.5~5.5	3.3	300	30		75	<p>Weight: 2.1g</p> <p>Isolation: 1500Vdc Note: all size units mm, diameter of all terminal 0.5mm, distance between all adjacent terminal 2.54mm</p>										
B0505D-1W			5	200	20		72											
B0509D-1W			9	111	12		75											
B0512D-1W			12	83	9		78											
B0515D-1W			15	67	7		80											
B0524D-1W			24	42	5		82											
B1203D-1W	12	10.8~13.2	3.3	300	30		75											
B1205D-1W			5	200	20		72											
B1209D-1W			9	111	12		78											
B1212D-1W			12	83	9		80											
B1215D-1W			15	67	7		83											
B1224D-1W			24	42	5		85											
B2403D-1W	24	21.6~26.4	3.3	300	30		75											
B2405D-1W			5	200	20		72											
B2409D-1W			9	111	12		79											
B2412D-1W			12	83	9		81											
B2415D-1W			15	67	7		84											
B2424D-1W			24	42	5		86											
								<table border="1"> <tr> <td>Pin</td> <td>1</td> <td>4</td> <td>5</td> <td>7</td> </tr> <tr> <td>Function</td> <td>GND</td> <td>Vin</td> <td>+Vo</td> <td>-Vo</td> </tr> </table>	Pin	1	4	5	7	Function	GND	Vin	+Vo	-Vo
Pin	1	4	5	7														
Function	GND	Vin	+Vo	-Vo														

F0503N-1W	5	4.5~5.5	3.3	300	30		75	<p>Weight: 2.1g</p> <p>Isolation: 3000Vdc Note: all size units mm, diameter of all terminal 0.5mm, distance between all adjacent terminal 2.54mm</p>										
F0505N-1W			5	200	20		72											
F0509N-1W			9	111	12		75											
F0512N-1W			12	83	9		78											
F0515N-1W			15	67	7		80											
F0524N-1W			24	42	5		82											
F1203N-1W	12	10.8~13.2	3.3	300	30		75											
F1205N-1W			5	200	20		72											
F1209N-1W			9	111	12		78											
F1212N-1W			12	83	9		80											
F1215N-1W			15	67	7		83											
F1224N-1W			24	42	5		85											
F2403N-1W	24	21.6~26.4	3.3	300	30		75											
F2405N-1W			5	200	20		72											
F2409N-1W			9	111	12		79											
F2412N-1W			12	83	9		81											
F2415N-1W			15	67	7		84											
F2424N-1W			24	42	5		86											
								<table border="1"> <tr> <td>Pin</td> <td>1</td> <td>4</td> <td>5</td> <td>7</td> </tr> <tr> <td>Function</td> <td>GND</td> <td>Vin</td> <td>+Vo</td> <td>-Vo</td> </tr> </table>	Pin	1	4	5	7	Function	GND	Vin	+Vo	-Vo
Pin	1	4	5	7														
Function	GND	Vin	+Vo	-Vo														

File Release Notes

DBN-101 Technical Data Sheet Version



No.	Version	Data	Description
1	V0	2011/11/01	First release
2			
3			
4			
5			

Delus Corporation

1. All data in addition to particular things, are Ta = 25°C, humidity<75%, nominal input voltage and output measured at rated load;
2. Non-standard models with some of the following indicators may be different from the specific circumstances of the Secretary to direct contact with me;
3. In the use of this manual, if some of them do not quite understand terms please refer to our <<DC / DC Converter Application Guide>>;
4. The Company focused on technological improvements, product specifications and parameter updates without notice, to pay attention to the latest information on website: www.delus.cn

All Delus Corporation's products are manufactured, assembled and tested utilizing ISO9001 quality systems.
For information regarding Delus Corporation and its products please see www.delus.cn